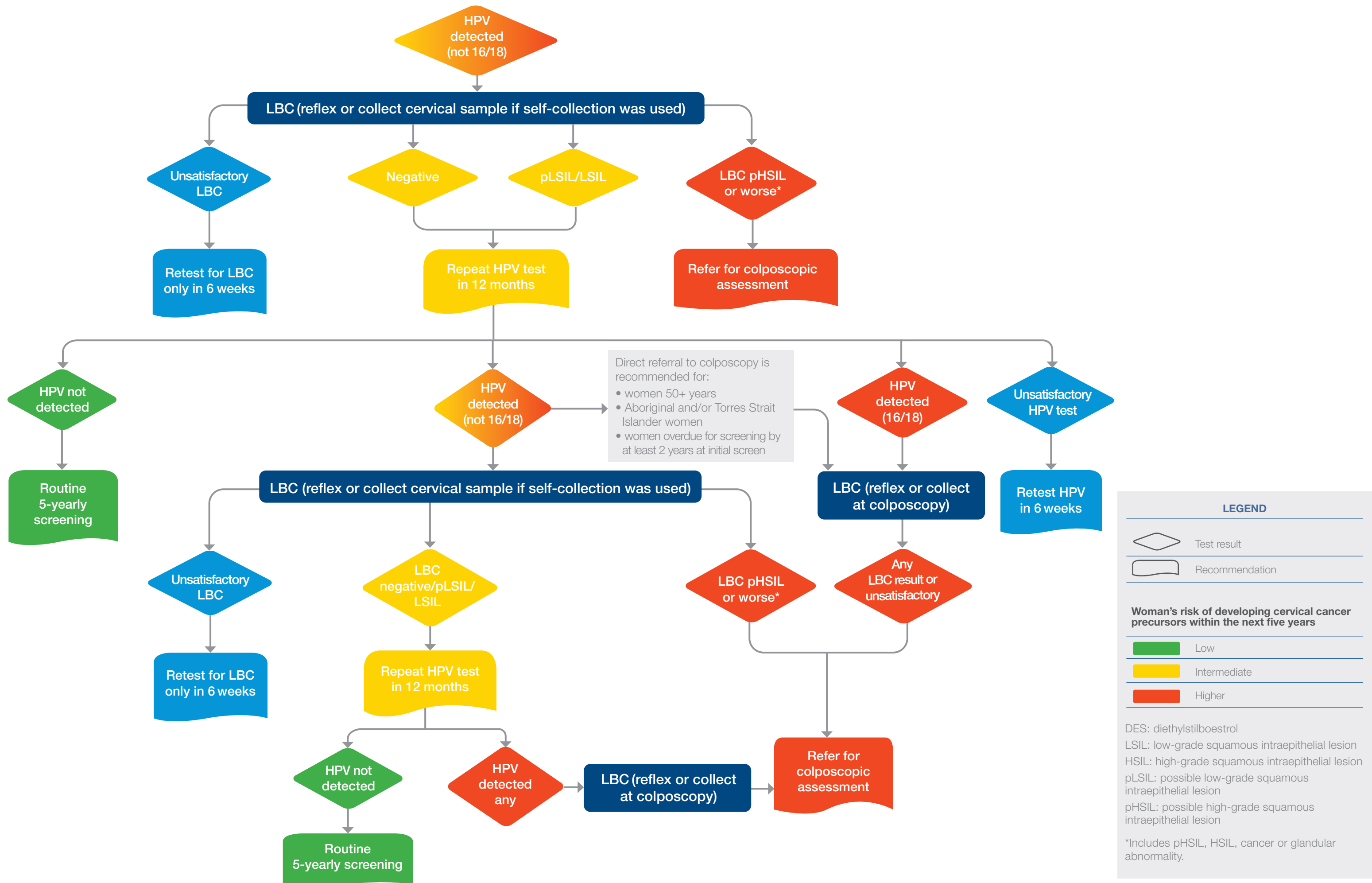


CERVICAL SCREENING PATHWAY (CLINICIAN COLLECTED OR SELF-COLLECTED)

Oncogenic HPV test with partial genotyping



Direct referral to colposcopy is recommended for:

- women 50+ years
- Aboriginal and/or Torres Strait Islander women
- women overdue for screening by at least 2 years at initial screen

LEGEND

◊ Test result

▭ Recommendation

Woman's risk of developing cervical cancer precursors within the next five years

- Low
- Intermediate
- Higher

DES: diethylstilboestrol
 LSIL: low-grade squamous intraepithelial lesion
 HSIL: high-grade squamous intraepithelial lesion
 pLSIL: possible low-grade squamous intraepithelial lesion
 pHSIL: possible high-grade squamous intraepithelial lesion

*Includes pHSIL, HSIL, cancer or glandular abnormality.