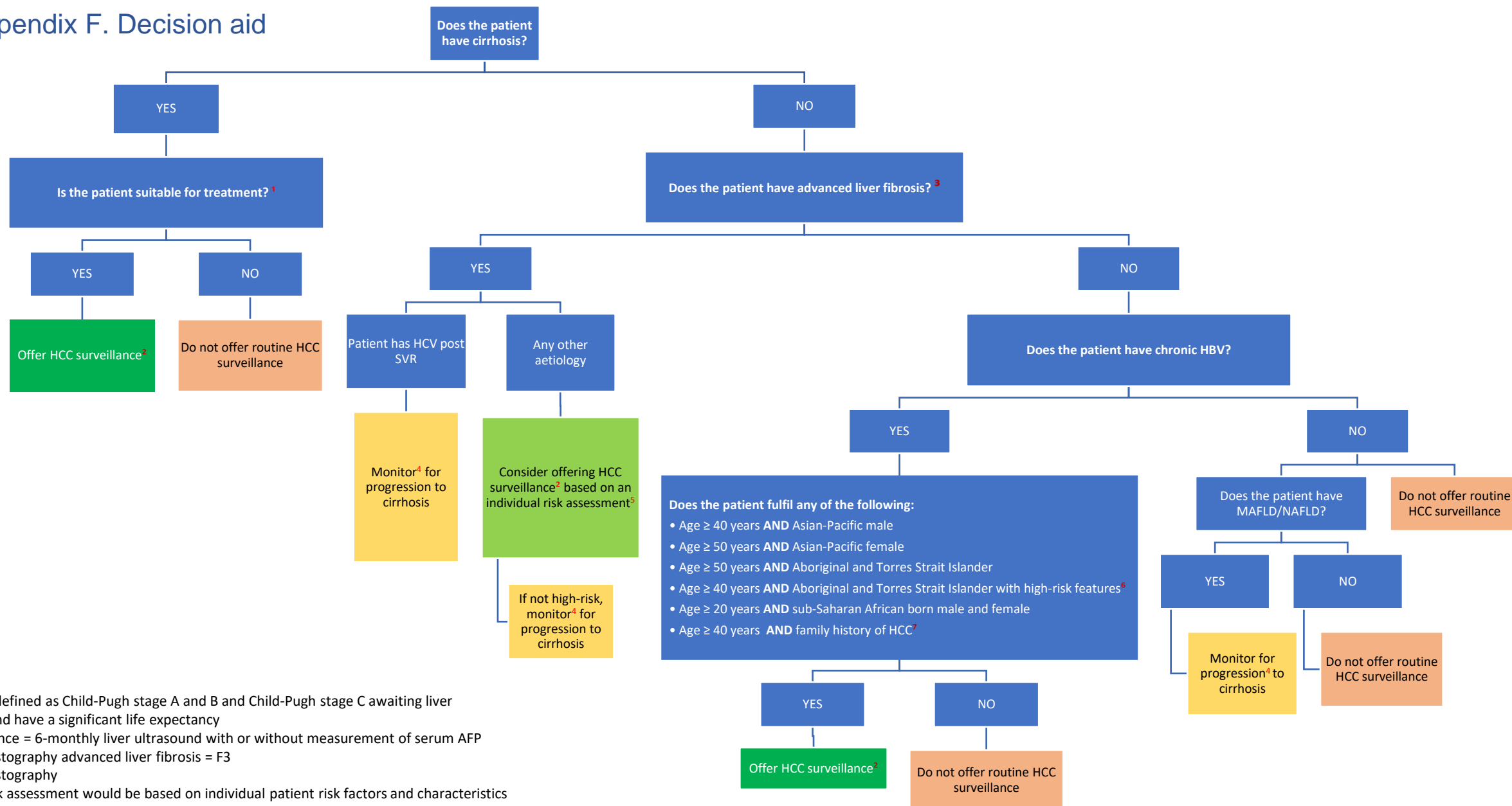


Appendix F. Decision aid



¹ Suitability is defined as Child-Pugh stage A and B and Child-Pugh stage C awaiting liver transplant and have a significant life expectancy

² HCC surveillance = 6-monthly liver ultrasound with or without measurement of serum AFP

³ Based on elastography advanced liver fibrosis = F3

⁴ Based on elastography

⁵ Individual risk assessment would be based on individual patient risk factors and characteristics

⁶ High-risk features are defined as family history of HCC or high-risk HBV genotype (either individually confirmed (e.g.C4) or epidemiologically likely. NB: genotype testing is not routinely offered and not subsidised through the Medical Benefits Schedule)

⁷ Family history of HCC is defined as one or more first degree relatives with HCC