

# Skin cancer in 3D



## Suggested year level

Years 9 and 10

## Prepare yourself (teacher)

View the ***Dark side of tanning*** clip and familiarise yourself with the ideas presented.

Some background knowledge of skin cancer risk factors and how basal cell, squamous cell and melanoma skin cancer invade the skin.

## Class resources

- Computer, data projector and screen to show the ***Dark side of tanning*** clip.
- Student computer access with internet connection.
- Modelling clay in a range of colours, chip board for the model base, coloured cardboard and toothpicks to label the model.

## Estimated time required

4 periods



## The activity

- 1 View the clip ***Dark side of tanning*** taking particular notice of the melanoma that is growing under the skin.

The skin is the largest organ of the body. Use the internet to research answers to the following questions:

- 2 What are the functions of skin?

---

---

---

---

- 3** What are the three primary layers which make up our skin? Describe what can be found in each layer.

---

---

---

---

- 4** What are the three primary types of skin cancer and which layer of the skin do they affect?

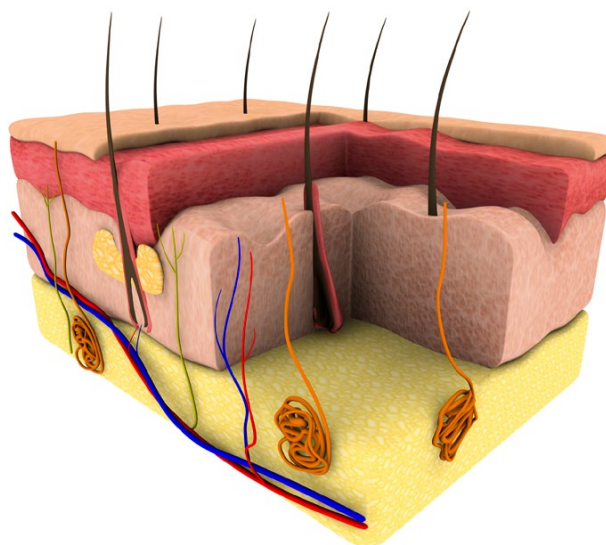
---

---

---

---

- 5** Using your new knowledge, construct a 3D model of the skin using the modeling clay provided. Your 3D model is to be used in a doctor's surgery to show patients what to look for when they check their own skin. Ensure that your model shows the layers of the skin with all parts clearly labelled, how UV affects the skin and the skin cancer signs to watch for.





## Teacher assessment advice

	Excellent	Very Good	Good	Average	Poor
Model accurately represents the anatomy of the skin.					
Model shows the effect of UV on the skin.					
Model shows the skin cancer signs to watch for.					
All parts of the model are clearly labelled.					
Quality of finished product is suitable for display in doctor's waiting room.					
Showed organisation and submitted the task on time.					

Total ..... / .....

### Teacher comments:

---

---

---

---

---

---

---

---

---

---



This image shows a full page of white paper with horizontal blue dashed lines, typical of primary school handwriting practice paper. The lines are evenly spaced and run across the entire width of the page. There are no margins, text, or other markings present.